

SOLANO COUNTY WATER AGENCY



August 3, 2015

Mr. Len Marino
Chief Engineer
Central Valley Flood Protection Board
3310 El Camino Avenue, Room 151
Sacramento, CA 95821

Subject: Request Authorization to Begin Work Prior to Central Valley Flood Protection Board Permit Issuance (CVFPB Permit Number 19047-1) for the Winters Putah Creek Park Phase III Restoration Project

Dear Mr. Marino:

The Solano County Water Agency (SCWA) requests your authorization to proceed with clearing and grubbing, grading, and native grass revegetation for the Winters Putah Creek Park (WPCP) Phase III restoration project. A permit application has been submitted for mitigation plantings for this project on June 3, 2015. SCWA believes that all required information for the CVFPB permit application has been submitted, but it might take CVFPB Staff some time to process the application (and to consult with the Army Corps of Engineers) for final approval.

This project is funded through Prop 84- River Parkways grant Program and is set to expire May 1, 2016. SCWA requests authorization to precede with certain project activities listed below prior to issuing Permit 19047-1 in an effort to complete major construction activities this fall before the start of flood season November 1 and the expiration of State grant funding in May.

The WPCP Phase III project is a multi-benefit project that improves riverine and floodplain ecosystems while protecting public safety. Implementation of the project improves flood conveyance, restores riparian habitat for native fish and wildlife species, and promotes recreation through enhanced public access to Putah Creek. The activities include removal of invasive vegetation, creation of low-terrace floodplains by realigning approximately 1,100 linear feet of existing low-flow channel, and installing native vegetation and spawning gravel.

This project will use a loader and an excavator for clearing and grubbing operations and an excavator and scrapers for earth moving. Clearing and grubbing would start immediately upon authorization to proceed and likely proceed until early September. Grading activities would start immediately after the clearing and grubbing was complete

810 Vaca Valley Parkway, Suite 203
Vacaville, California 95688
Phone (707) 451-6090 • FAX (707) 451-6099
www.scwa2.com



Mr. Marino Letter, Page Two

and may proceed through the end of October. Native grass seeding and blown straw post-construction erosion control would be applied following the completion of grading work. Mitigation plantings would not occur until SCWA receives a CVFPB encroachment permit.

Scope of Work (See Exhibit ^A~~B~~):

- Removal of invasive vegetation
- Realignment of approximately 1,100 linear feet of Putah Creek
 - Approximately 26,000 Cubic Yards (CY) cut material produced
 - Approximately 25,600 CY total fill required
 - Approximately 10,000 CY additional fill may be required
- Native grass seeding

All other activities described in the plans will be completed after the permit is issued.

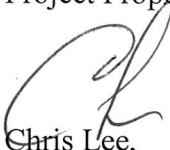
The Solano County Water Agency certifies all of the following:

- Only the work described shall be performed.
- SCWA acknowledges that all work must be performed in accordance with the applicable standards set forth in Title 23 of the California Code of Regulations.
- All debris resulting from the project will be burned and/or removed from the site.
- The City of Winters owns all of the land within the project footprint and they fully support this project and they are the Lead CEQA agency. CEQA compliance was completed in 2008.
- The Executive Officer of the Central Valley Flood Protection Board has the right to revoke this request at any time based on weather and field conditions.
- No construction work of any kind shall be done during the flood season from November 1 to April 15 without prior written approval of the Central Valley Flood Protection Board. Approval can be given on a two week basis dependent on the weather forecast and can be revoked at any time by the Board if inclement weather is pending.
- SCWA will be responsible for any damages caused by this project
- SCWA will notify DWR's Flood Project Inspection Section at (916) 574-1212 immediately upon approval to proceed.
- SCWA acknowledges that this authorization does not relieve SCWA's responsibility to obtain authorization from all concerned Federal, State and local agencies or to satisfy any California Environmental Quality Act requirements.
- No other work other than the work described herein will be performed at the site without prior authorization of the Central Valley Flood Protection Board

Vicinity and location map are attached as Exhibit ^B~~A~~.

Mr. Marino Letter, Page Three

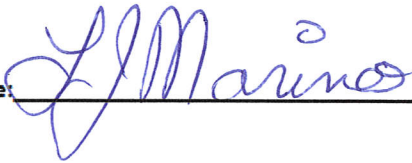
Project Proponent:



Chris Lee,
Principal Water Resources Specialist
Solano County Water Agency

By signing and dating below, I, Chief Engineer for CVFPB, approve this authorization.

Signature:



Date:

8/11/15

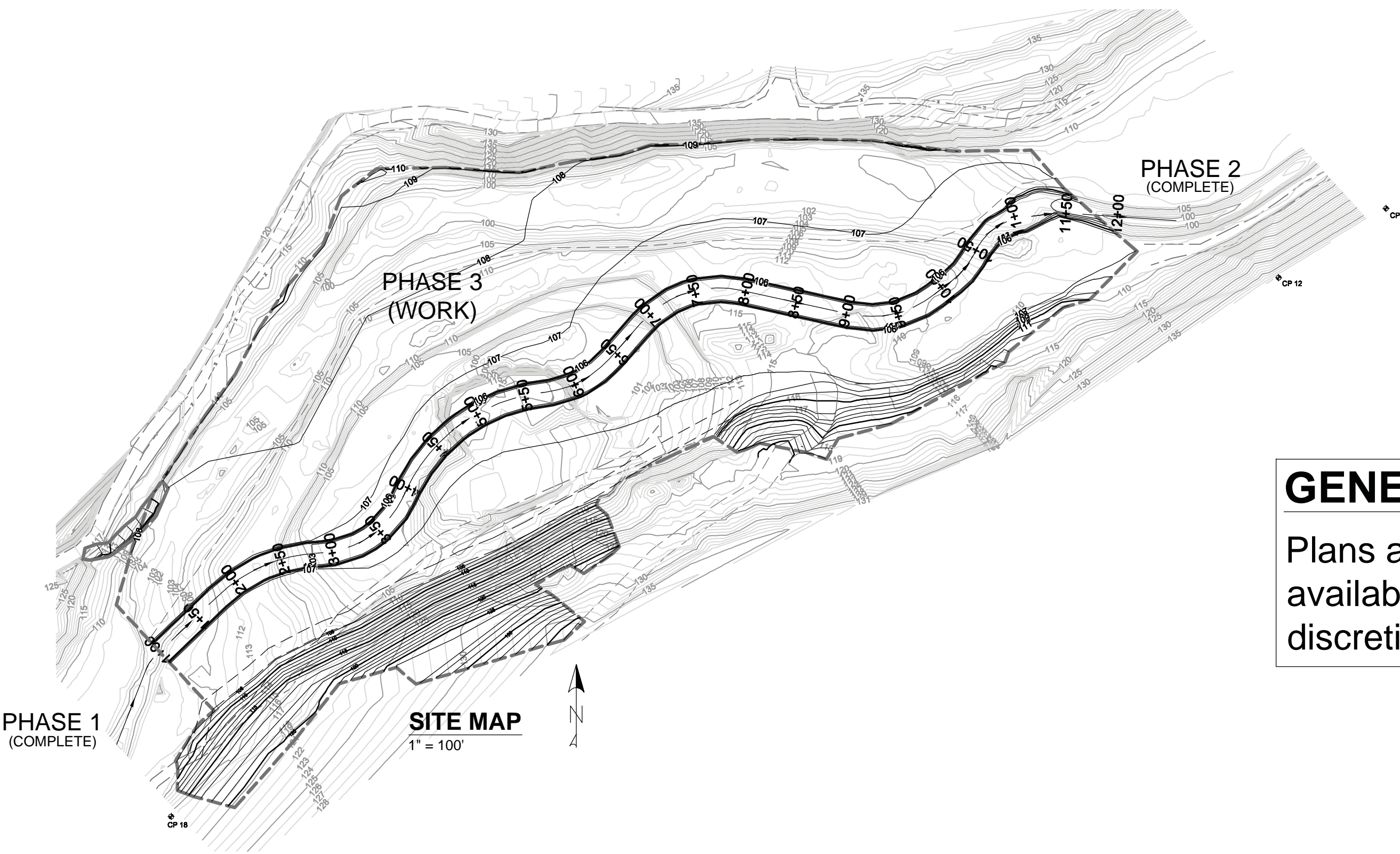
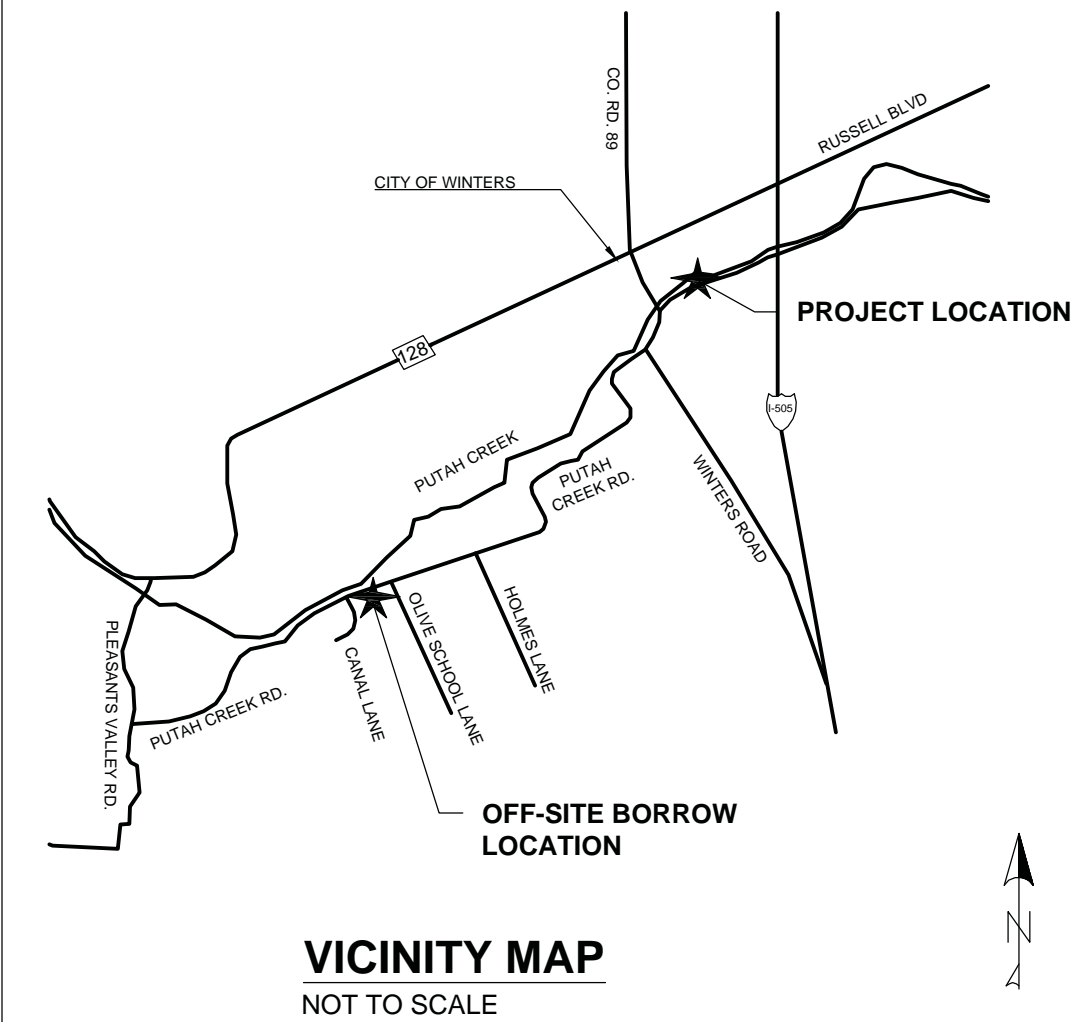
Attachments

IMPROVEMENT PLANS FOR WINTERS PUTAH CREEK PARK FLOODPLAIN RESTORATION, PHASE 3

SOLANO COUNTY WATER AGENCY &
LOWER PUTAH CREEK COORDINATING COMMITTEE
SOLANO COUNTY, CALIFORNIA
APRIL 2015

SHEET INDEX

- 1. Title Sheet
- 2. Site Plan
- 3. Design Channel & Floodplain Grading: Plan & Profile
- 4. Design Channel & Floodplain Grading: Cross-Sections
- 5. South Drain Improvement
- 6. North Access Ramp
- 7. South Access Road Improvement
- 8. Erosion Control Plan

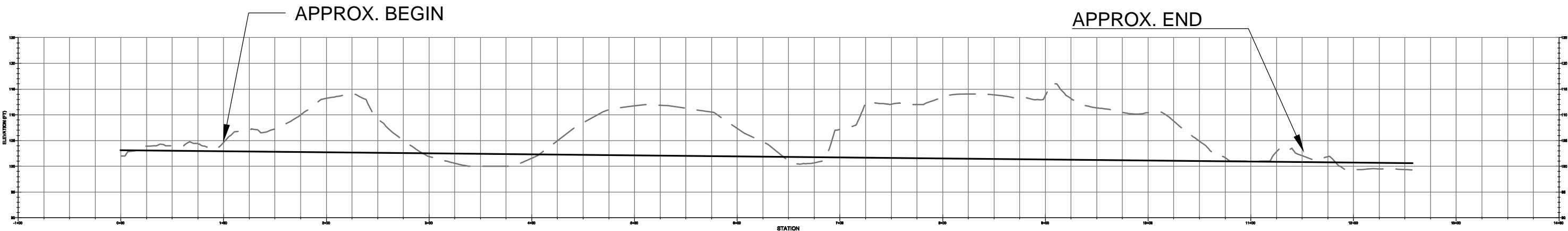


GENERAL NOTES

Plans are conceptual and are as accurate as the available data. Field modifications may be made at discretion of Agency.

ABBREVIATIONS

AB	AGGREGATE BASE	GB	GRADE BREAK	PUE	PUBLIC UTILITY EASEMENT
AGG	AGGREGATE	GV	GATE VALVE	PVMT	PAVEMENT
ASTM	AMERICAN SOCIETY FOR TESTING MATERIALS	GALV.	GALVANIZED	R	RADIUS
AWWA	AMERICAN WATER WORKS ASSOCIATION	HC	HANDICAP	R/W	RIGHT OF WAY
ANG. PT.	ANGLE POINT	HDPE	HIGH DENSITY POLYETHYLENE	RD	ROAD
AC	ASPHALT CONCRETE	HP	HIGH POINT	RP	RADIUS POINT
BC	BEGINNING OF CURVE	HPS	HIGH PRESSURE SODIUM	RCP	REINFORCED CONCRETE PIPE
BLVD.	BOULEVARD	HORIZ.	HORIZONTAL	RT	RIGHT
BLDG.	BUILDING	INTX	INTERSECTION	S	SLOPE, SEWER, SOUTH, SANITARY LINE
BOC	BACK OF CURB	INV, IE	INVERT ELEVATION	SB	SIGNAL PULL BOX
BOW, B/W	BACK OF WALK	IRR	IRRIGATION	SD	STORM DRAIN
BOV	BLOW OFF VALVE	L	LENGTH	SERV	SERVICE
BMP	BEST MANAGEMENT PRACTICES	LD	LANDSCAPE DRAIN	SF	SQUARE FEET
CC	CENTER ON CENTER	LF	LINEAL FEET	SHT	SHEET
CIPCP	CAST-IN-PLACE CONCRETE PIPE	LN	LANE	SPEC	SPECIFICATION
CL	CENTERLINE, CLASS	LP	LOW POINT	SS	SANITARY SEWER
C.O.	CLEAN OUT, COMPANY	LT	LEFT	ST	STREET
CONC.	CONCRETE	LTB	LIME TREATED BASE	STA	STATION
CONST	CONSTRUCT	MAX	MAXIMUM	STD	STANDARD
CORP.	CORPORATION	MH	MAINTENANCE HOLE	STE	SUITE
CP	CONCRETE PIPE	SDMH	STORM DRAIN MAINTENANCE HOLE	SUBD.	SUBDIVISION
CR	CURB RETURN	SSMH	SANITARY SEWER MAINTENANCE HOLE	S.L.	STREET LIGHT
CT	COURT	MIN	MINIMUM	S/W	SIDEWALK
D	DRAIN LINE	N	NORTH	TA	TOP OF APRON
DI	DRAIN INLET	NG	NATURAL GROUND	TBD	TO BE DETERMINED
DIP	DUCTILE IRON PIPE	N.I.C.	NOT IN CONTRACT	TBW	TOP BALK OF WALK
DR.	DRIVE	NO	NUMBER	TC	TOP OF CURB
DT	DRAINAGE TILE	NPTC	NOT PART OF THIS CONTRACT	TI	TRAFFIC INDEX
D/W	DRIVEWAY ENTRANCE	NTS	NOT TO SCALE	TPM	TENTATIVE PARCEL MAP
E	EAST, ELECTRIC	OC	ON CENTER	TRANS	TRANSITION
EA	EACH	OHE	OVERHEAD ELECTRIC	TV	TELEVISION
EC	END OF CURVE	PB	ELECTRIC PULL BOX	TYP.	TYPICAL
ELEV, EL	ELEVATION	PCC	PORTLAND CEMENT CONCRETE	USGS	UNITED STATES GEOLOGICAL SURVEY
E.P.	EDGE OF PAVEMENT	PC	POINT OF COMPOUND CURVE	VC	VERTICAL CURVE
ESMT.	EASEMENT	PED	PEDESTAL, PEDESTRIAN	VCP	VITRIFIED CLAY PIPE
ETC.	ETCETERA	PI	POINT OF INTERSECTION	VERT.	VERTICAL
EXIST, EX.	EXISTING	PG&E	PACIFIC GAS & ELECTRIC COMPANY	W	WEST, WATER
FF	FINISHED FLOOR	PKWY	PARKWAY	WM	WATER MAIN
FI	FIRE HYDRANT	PL	PROPERTY LINE, PLACE	WTR	WATER
FIN	FINISH	POC	POINT OF CONNECTION	W/	WITH
FL	FLOW LINE	PRC	POINT OF REVERSE CURVE	XING	CROSSING
FM	FORCE MAIN	PSI	POUNDS PER SQUARE INCH		
FOC	FACE OF CURB	PT	POINT, POINT OF TANGENCY		



DESIGN CHANNEL VERTICAL PROFILE

1" = 100' HORIZONTAL
1" = 20' VERTICAL

CLIENT:
Solano County Water Agency
810 Vaca Valley Parkway
Suite 203
Vacaville, CA 95688
(707) 451-6090

PROPERTY OWNER:
City of Winters
318 First Street
Winters, CA 95618
(530) 758-2026

DESIGNED BY	JB				
DRAWN BY	JB				
CHECKED BY	TP				
REV.	DATE	DESCRIPTION	BY	APP'D	

COMMENTS:



SOLANO COUNTY WATER AGENCY
810 VACA VALLEY PARKWAY, SUITE 203,
VACAVILLE, CA 95688
PHONE (707) 451-6090, FAX (707) 451-6099



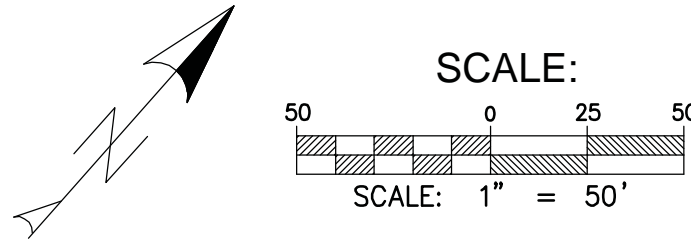
TITLE SHEET
WINTERS PUTAH CREEK PARK
DESIGN CONDITION: PHASE 3

SOLANO COUNTY

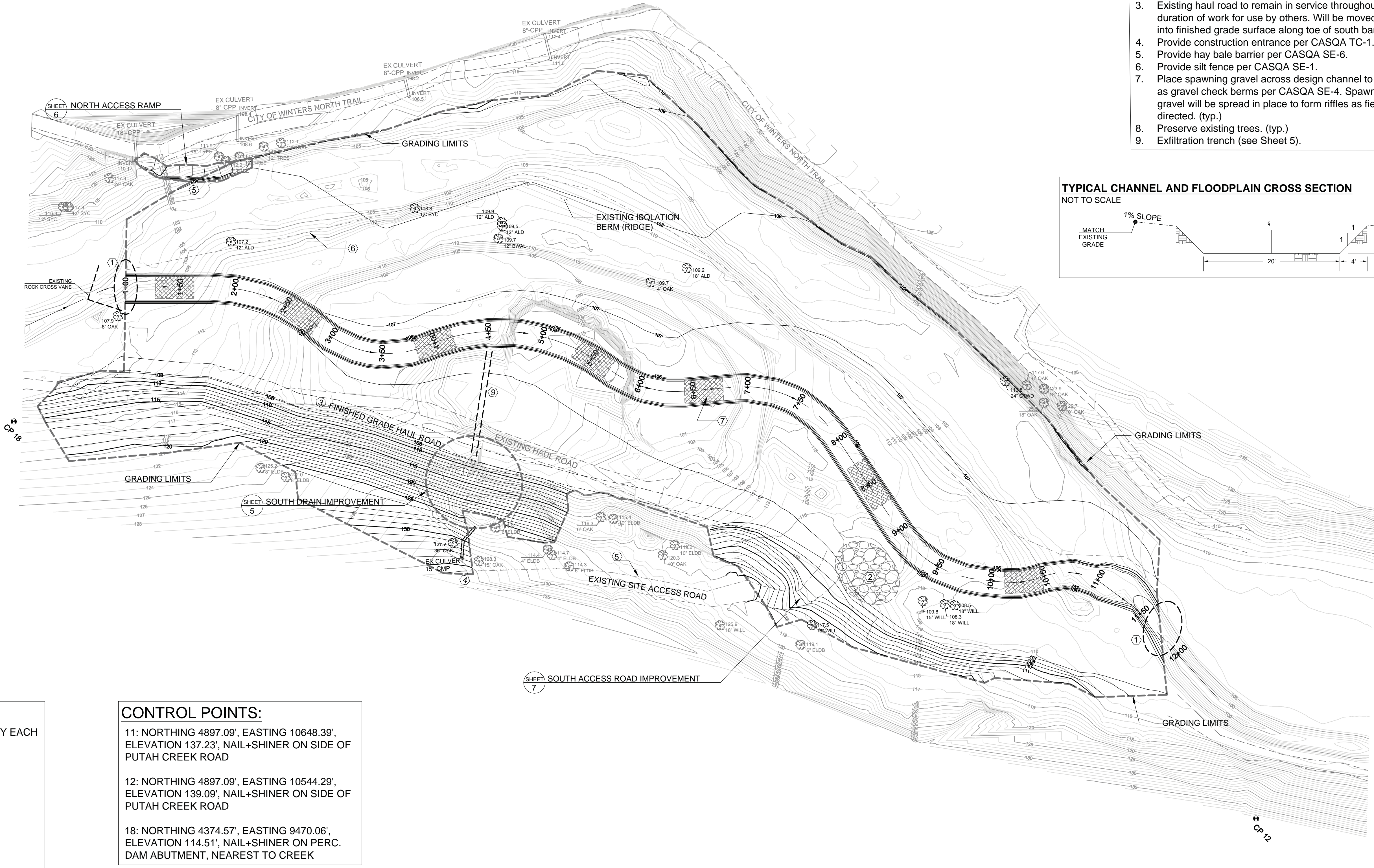
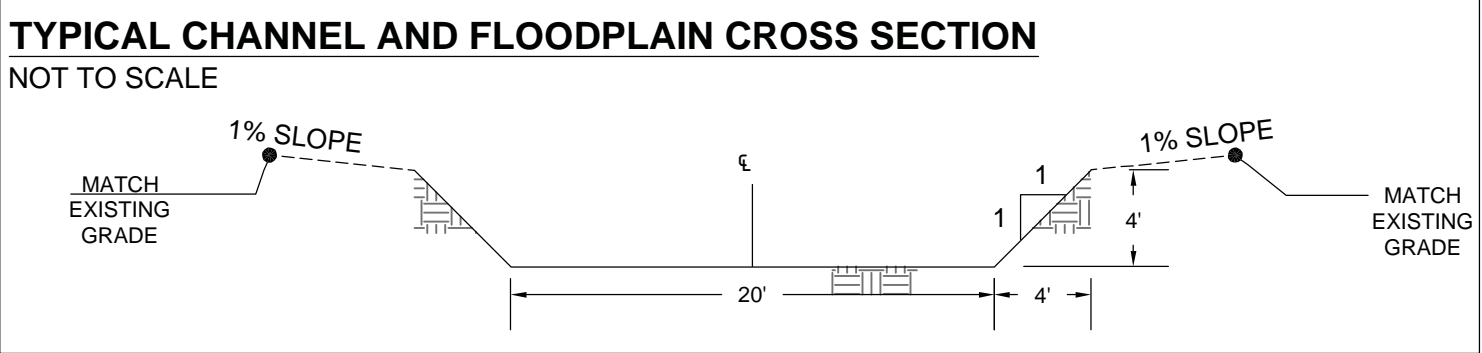
CALIFORNIA

SCALE VARIES	SHEET 1 OF 8
DATE: 04-10-2015 FILE NO. L-119	

WINTERS PUTAH CREEK PARK - PHASE 3 - SITE PLAN



- GENERAL NOTES:**
1. Transition to existing channel, field directed.
 2. Spawning gravel stockpile provided by Agency, approx. 200 CY, initially for check dams. Use ultimately to develop spawning riffles.
 3. Existing haul road to remain in service throughout duration of work for use by others. Will be moved to tie into finished grade surface along toe of south bank.
 4. Provide construction entrance per CASQA TC-1.
 5. Provide hay bale barrier per CASQA SE-6.
 6. Provide silt fence per CASQA SE-1.
 7. Place spawning gravel across design channel to perform as gravel check berms per CASQA SE-4. Spawning gravel will be spread in place to form riffles as field directed. (typ.)
 8. Preserve existing trees. (typ.)
 9. Exfiltration trench (see Sheet 5).



- LEGEND:**
- CHANNEL RIFFLE, APPROX. 30 CY EACH
 - CONTROL POINT
 - LARGE TREE / VEGETATION
ELEVATION (FT)
DIAMETER (APPROX.), TYPE
TYPES: OAK = OAK
SYC = SYCAMORE
ALD = ALDER
ELDB = ELDERBERRY
CTWD = COTTONWOOD
BWAL = BLACK WALNUT
WILL = WILLOW
TREE = UNDETERMINED

- CONTROL POINTS:**
- 11: NORTHING 4897.09', EASTING 10648.39',
ELEVATION 137.23', NAIL+SHINER ON SIDE OF
PUTAH CREEK ROAD
- 12: NORTHING 4897.09', EASTING 10544.29',
ELEVATION 139.09', NAIL+SHINER ON SIDE OF
PUTAH CREEK ROAD
- 18: NORTHING 4374.57', EASTING 9470.06',
ELEVATION 114.51', NAIL+SHINER ON PERC.
DAM ABUTMENT, NEAREST TO CREEK

DESIGNED BY	JB				
DRAWN BY	JB				
CHECKED BY	TP				
REV.	DATE	DESCRIPTION	BY	APP'D	

COMMENTS:

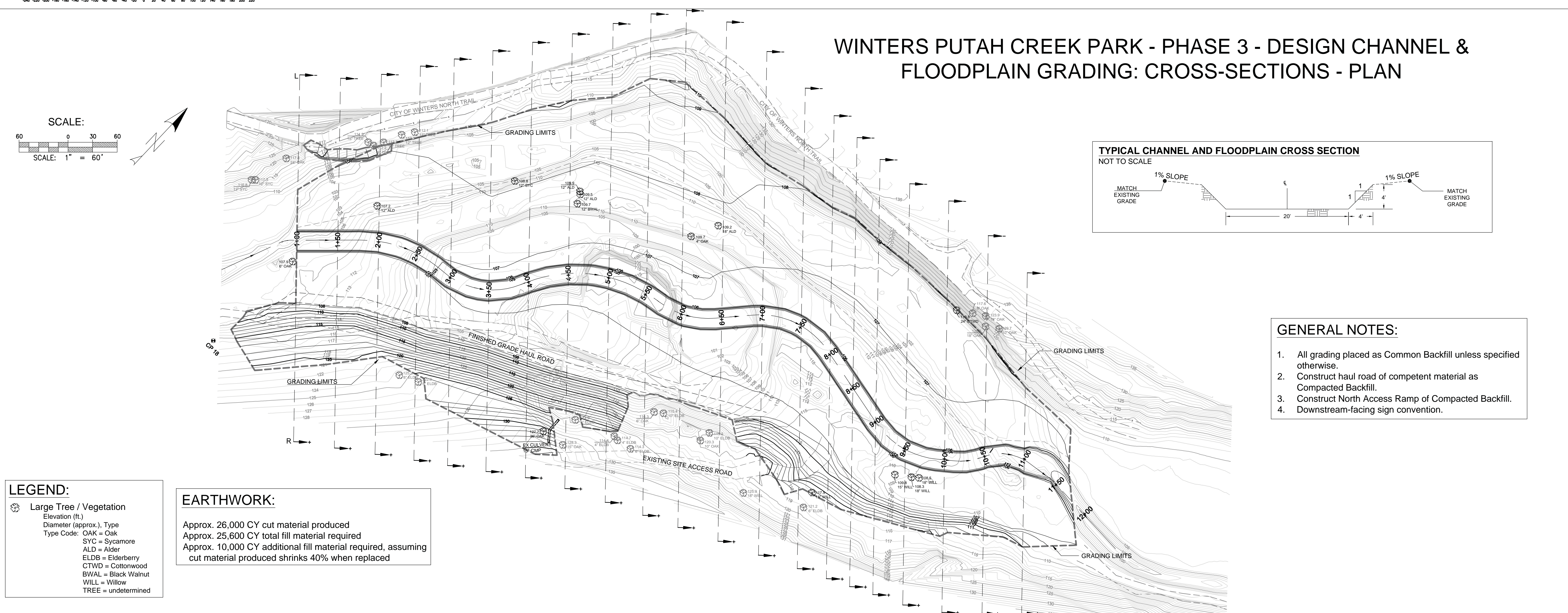
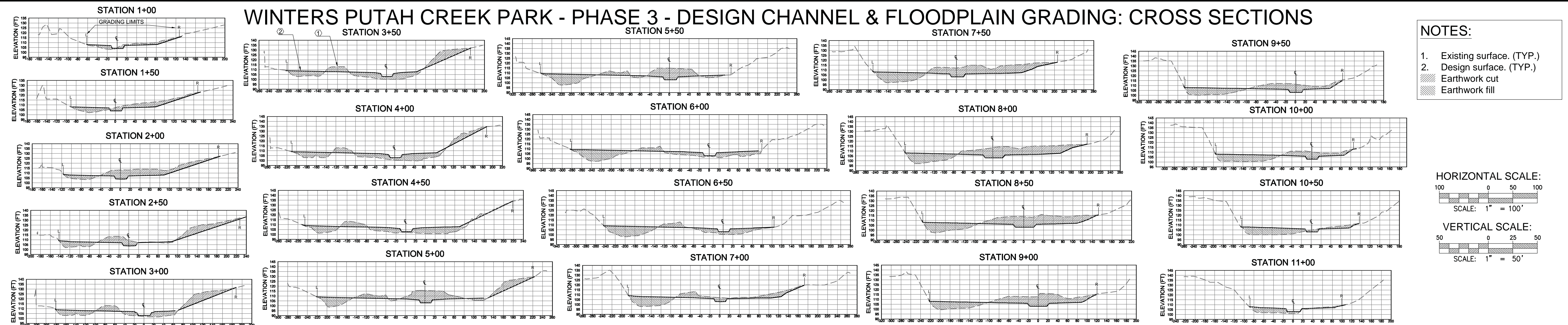


SOLANO COUNTY WATER AGENCY
810 VACA VALLEY PARKWAY, SUITE 203,
VACAVILLE, CA 95688
PHONE (707) 451-6090, FAX (707) 451-6099



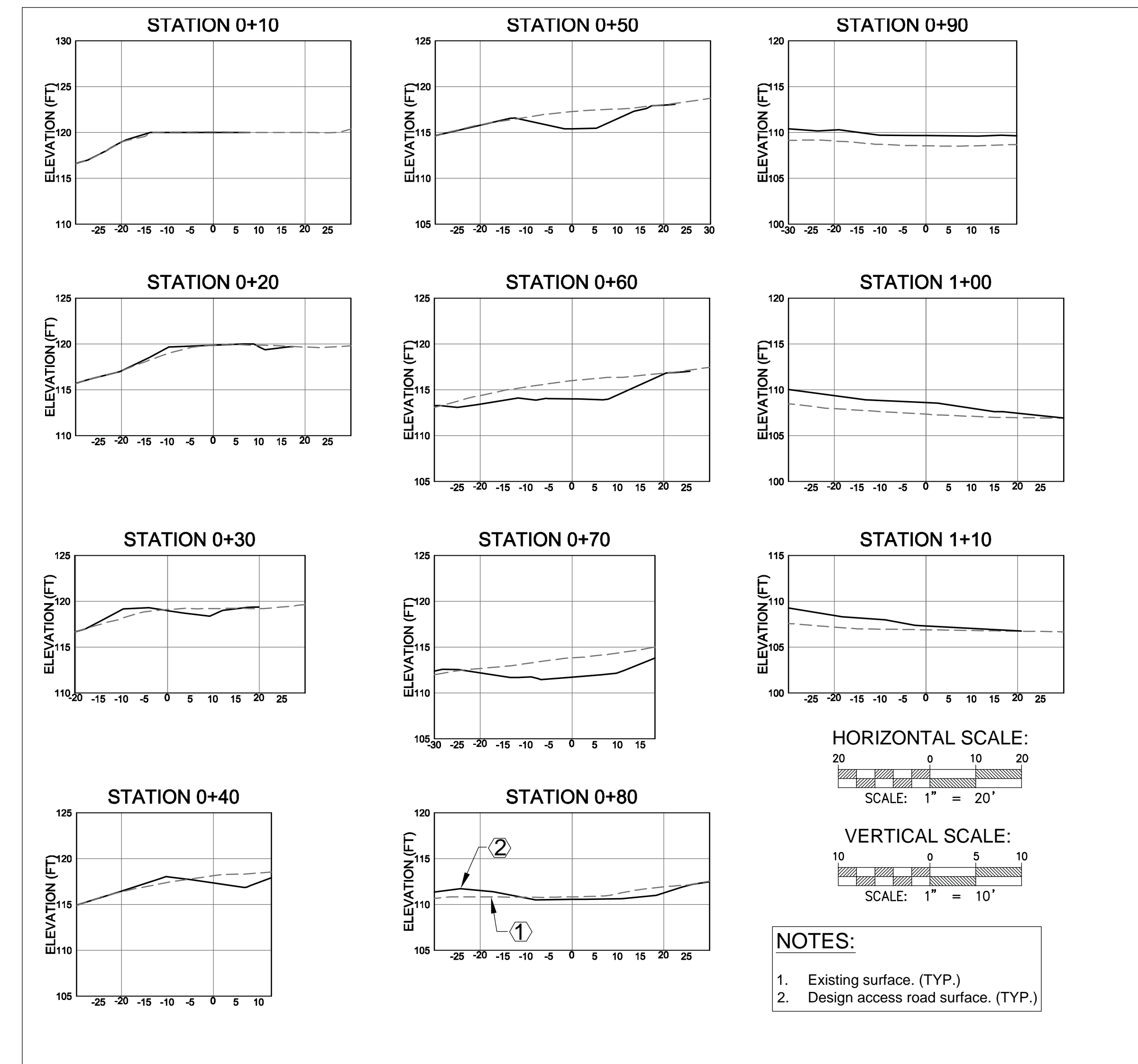
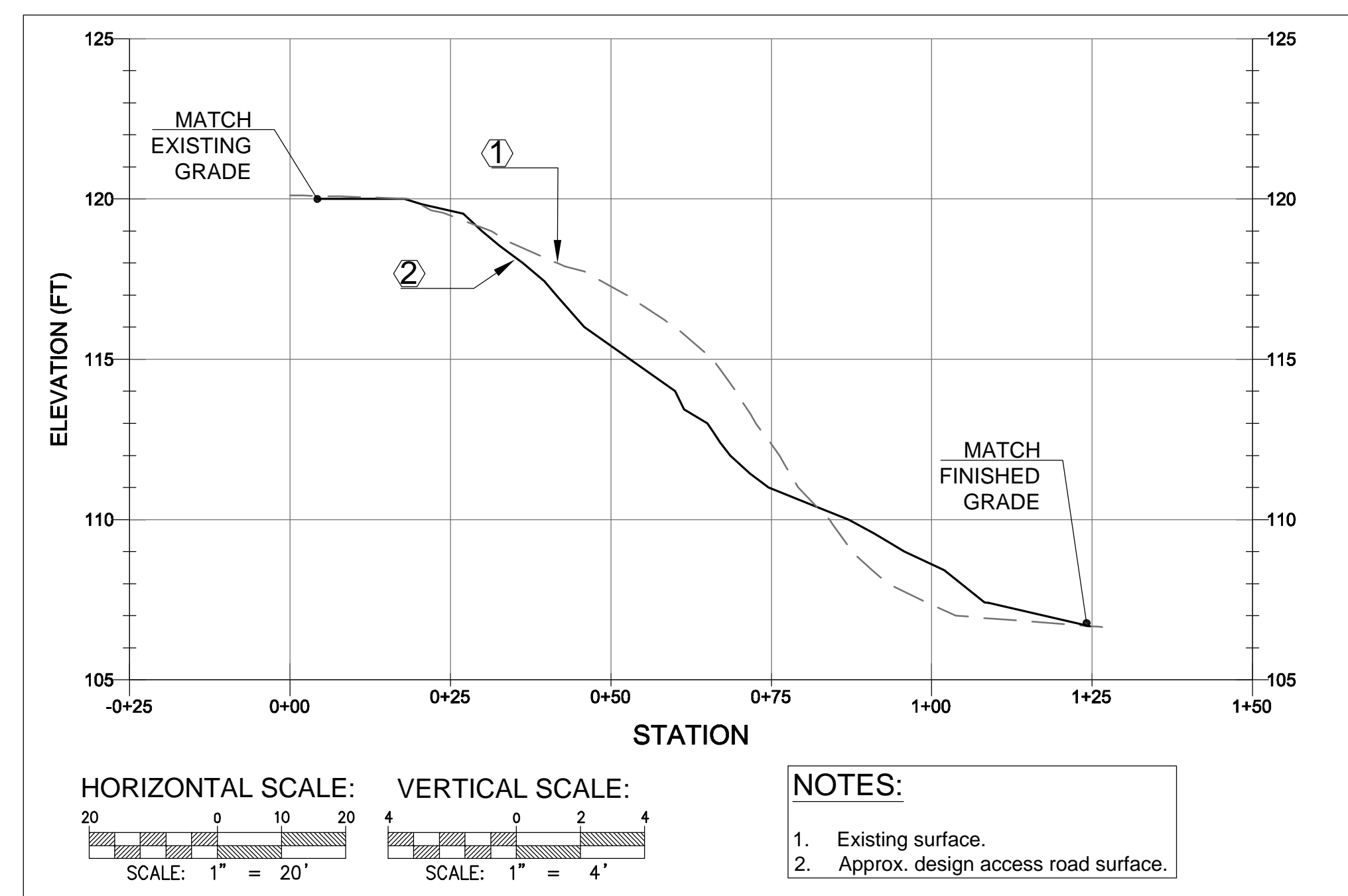
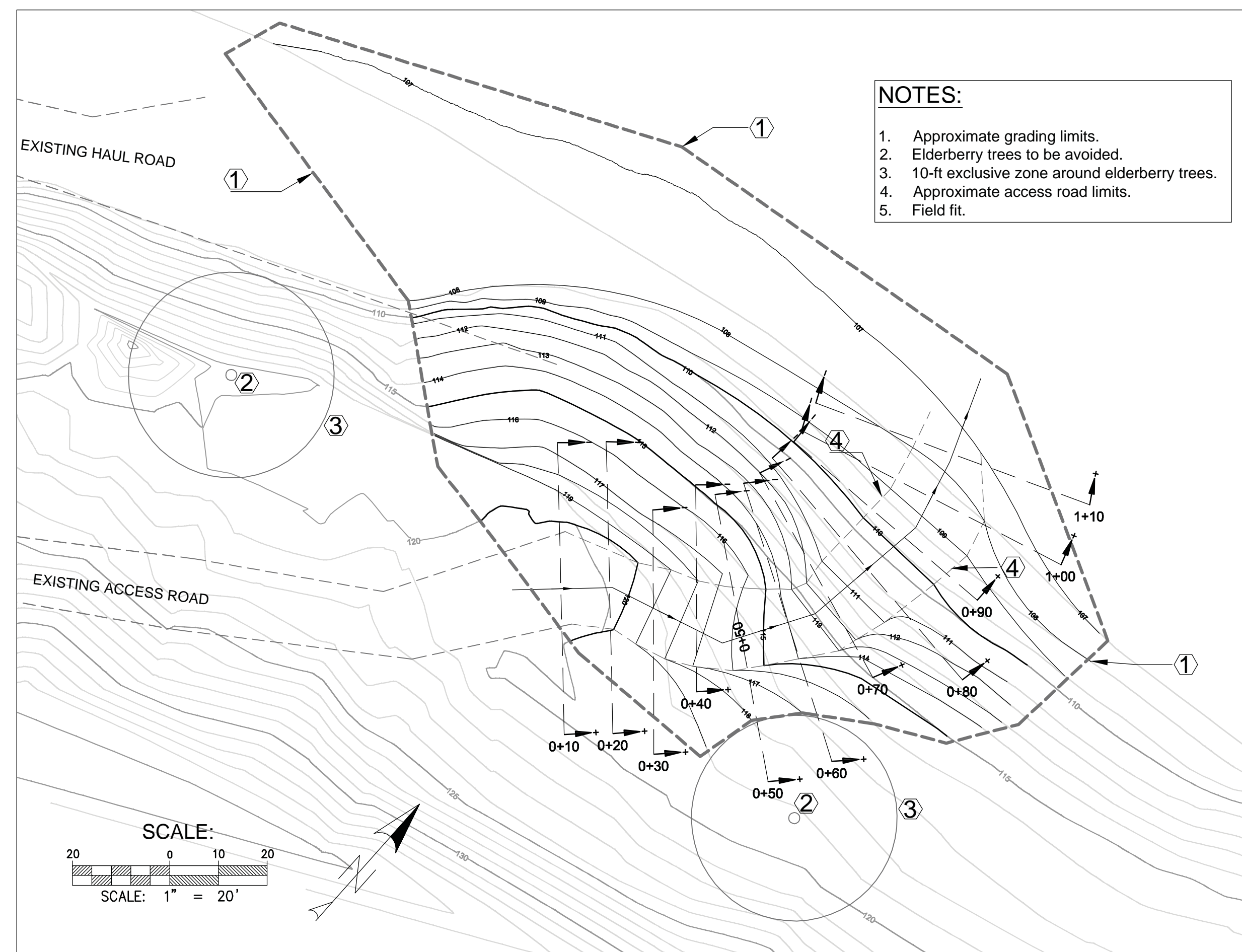
SITE PLAN
WINTERS PUTAH CREEK PARK
DESIGN CONDITION: PHASE 3
SOLANO COUNTY CALIFORNIA

SCALE	SHEET
1" = 50'	2
DATE: 04-10-2015	OF
FILE NO. L-119	8

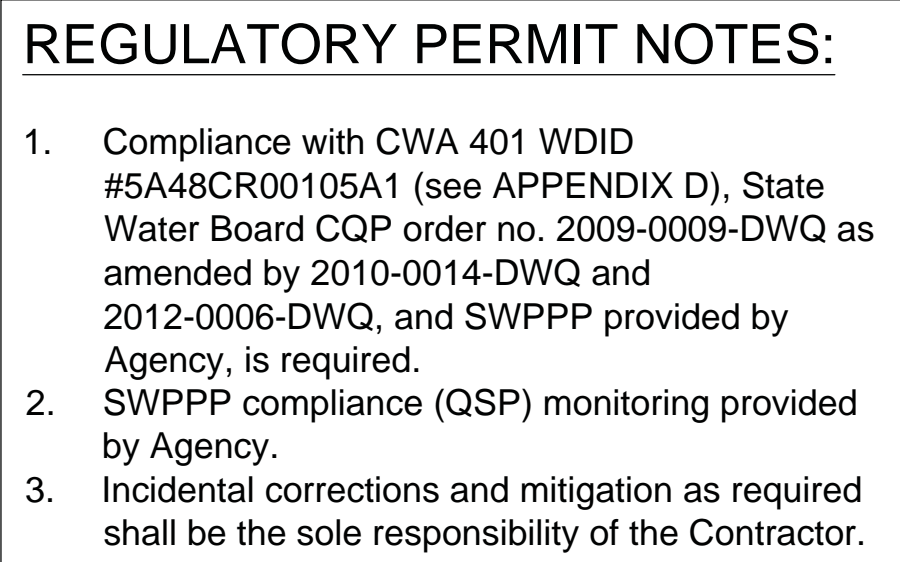


<i>DESIGNED BY</i>	J B						<i>COMMENTS:</i>		<i>SOLANO COUNTY WATER AGENCY 810 VACA VALLEY PARKWAY, SUITE 203, VACAVILLE, CA 95688 PHONE (707) 451-6090, FAX (707) 451-6099</i>		<i>DESIGN CHANNEL & FLOODPLAIN GRADING: CROSS-SECTIONS</i>		<i>SCALE</i> VARIES	<i>SHEET</i> 4
<i>DRAWN BY</i>	J B												<i>DATE:</i> 04-10-2015	<i>OF</i> 8
<i>CHECKED BY</i>	T P												<i>FILE NO.</i> L-119	
<i>REV.</i>	<i>DATE</i>	<i>DESCRIPTION</i>	<i>BY</i>	<i>APP'D.</i>					<i>SOLANO COUNTY</i>		<i>CALIFORNIA</i>			

WINTERS PUTAH CREEK PARK - PHASE 3 - SOUTH ACCESS ROAD IMPROVEMENT



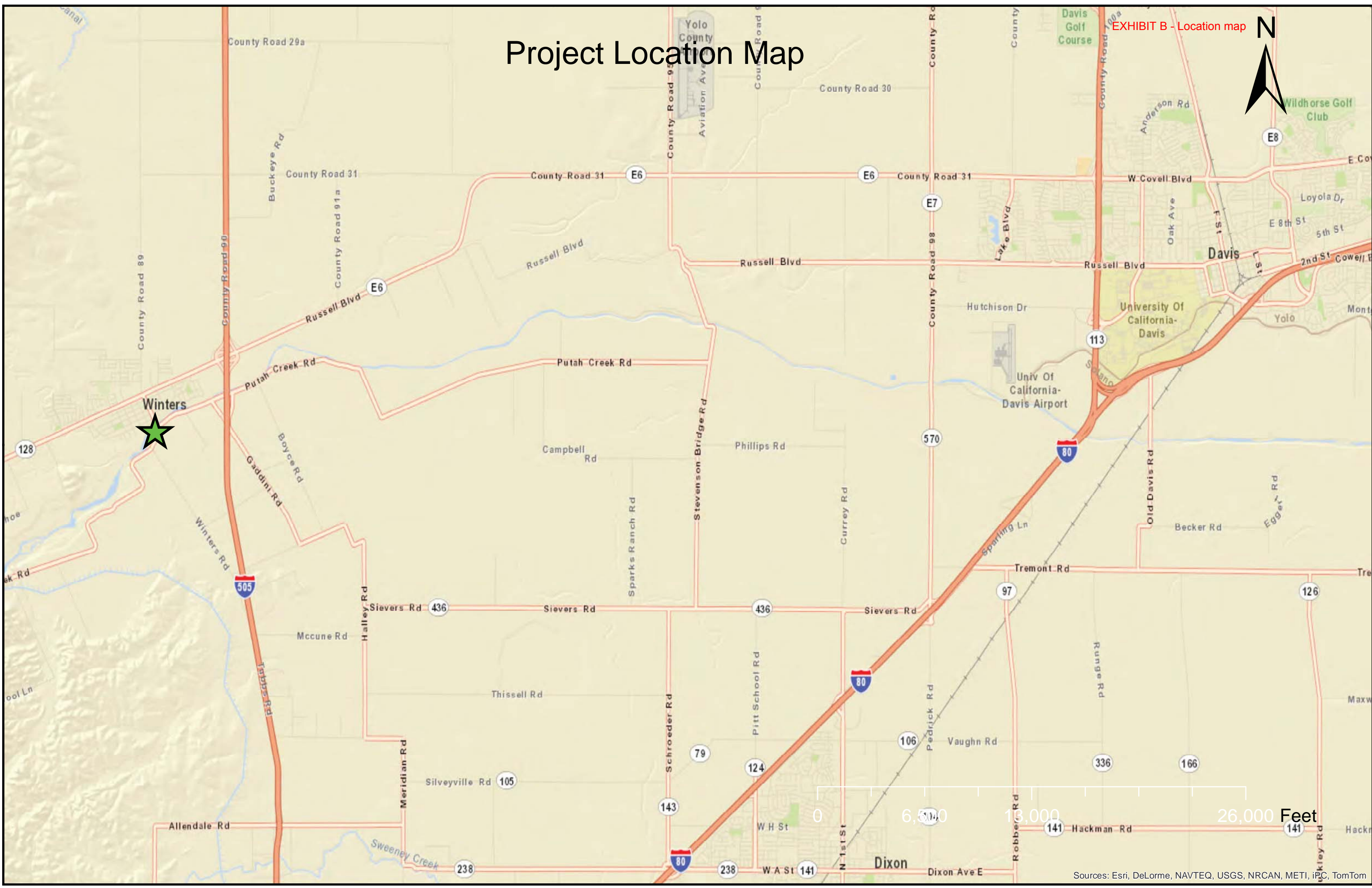
DESIGNED BY	JB				COMMENTS:	 <p>SOLANO COUNTY WATER AGENCY 810 VACA VALLEY PARKWAY, SUITE 203, VACAVILLE, CA 95688 PHONE (707) 451-6090, FAX (707) 451-6099</p>	 <p><u>SOUTH ACCESS ROAD IMPROVEMENT</u> WINTERS PUTAH CREEK PARK DESIGN CONDITION: PHASE 3</p>	SOLANO COUNTY CALIFORNIA	SCALE	SHEET 7 OF 8
DRAWN BY	JB								VARIES	
CHECKED BY	TP								DATE: 04-10-2015 FILE NO. L-119	
REV.	DATE	DESCRIPTION	BY	APP'D.						



DESIGNED BY	JB					COMMENTS:		SOLANO COUNTY WATER AGENCY 810 VACA VALLEY PARKWAY, SUITE 203, VACAVILLE, CA 95688 PHONE (707) 451-6090, FAX (707) 451-6099		EROSION CONTROL PLAN WINTERS PUTAH CREEK PARK DESIGN CONDITION: PHASE 3	SCALE	SHEET
DRAWN BY	JB										1" = 40'	8
CHECKED BY	TP										DATE: 04-10-2015 FILE NO. L-119	OF 8
REV.	DATE	DESCRIPTION	BY	APP'D.								

Project Location Map

EXHIBIT B - Location map



Project Site Map

EXHIBIT B - Location map

N



Yolo County




Solano County

City of Winters

Putah Creek

I-505

Legend

-  Phase 1 (Complete)
-  Phase 2 (Complete)
-  Phase 3 (Scheduled June 2015)

0 800 1,600 3,200 Feet

Source: Esri, DigitalGlobe, GeoEye, Earthstar Geographics, CNES/Airbus DS, USDA, USGS, AEX, Getmapping, Aerogrid, IGN, IGP, swisstopo, and the GIS User Community